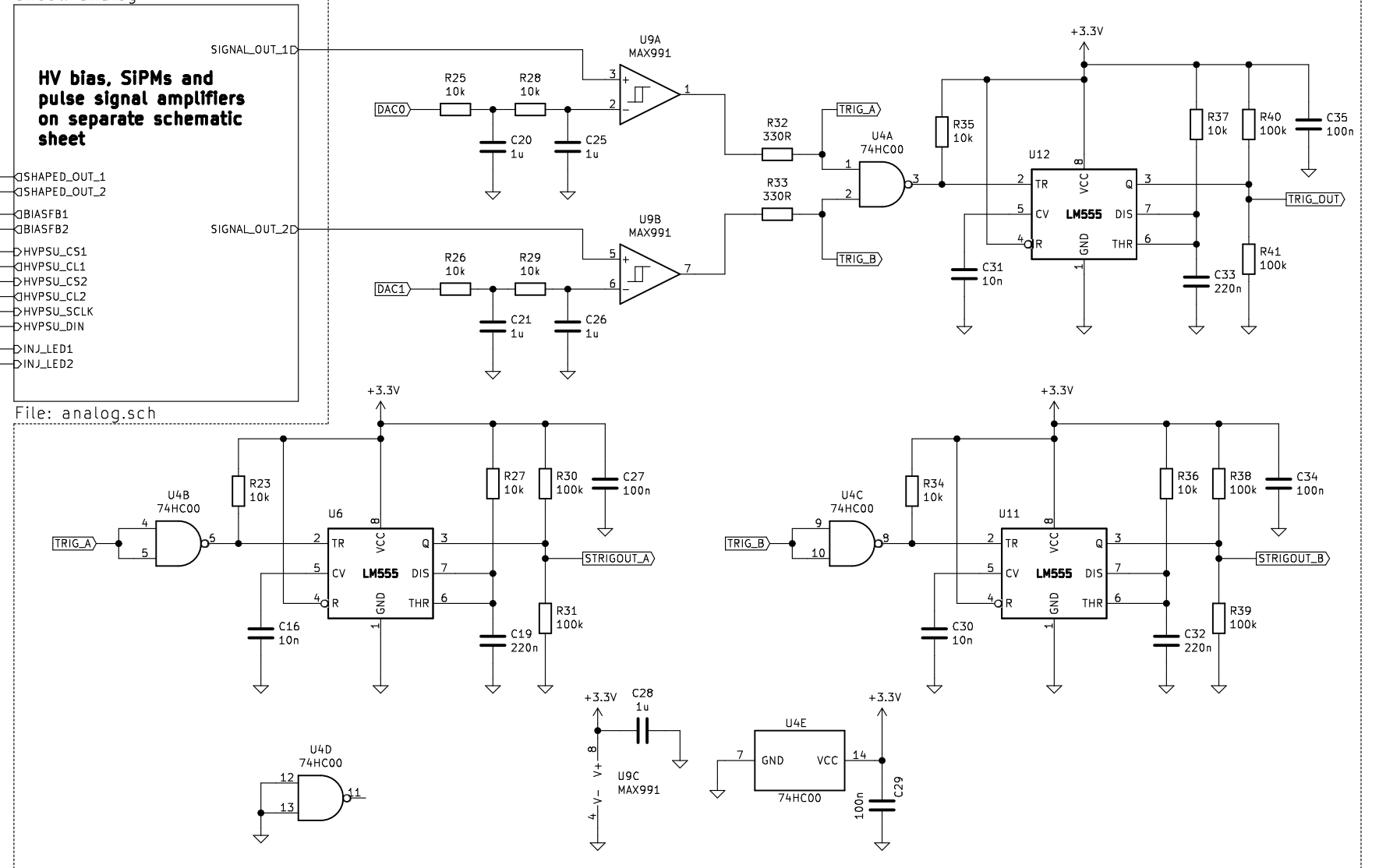


Sheet: analog

HV bias, SIPMs and pulse signal amplifiers on separate schematic sheet

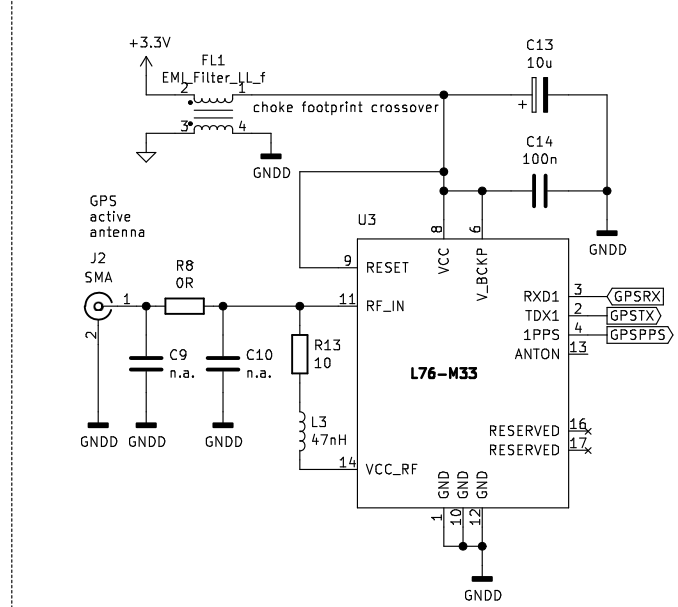
File: analog.sch

Trigger – coincidence and separate channels

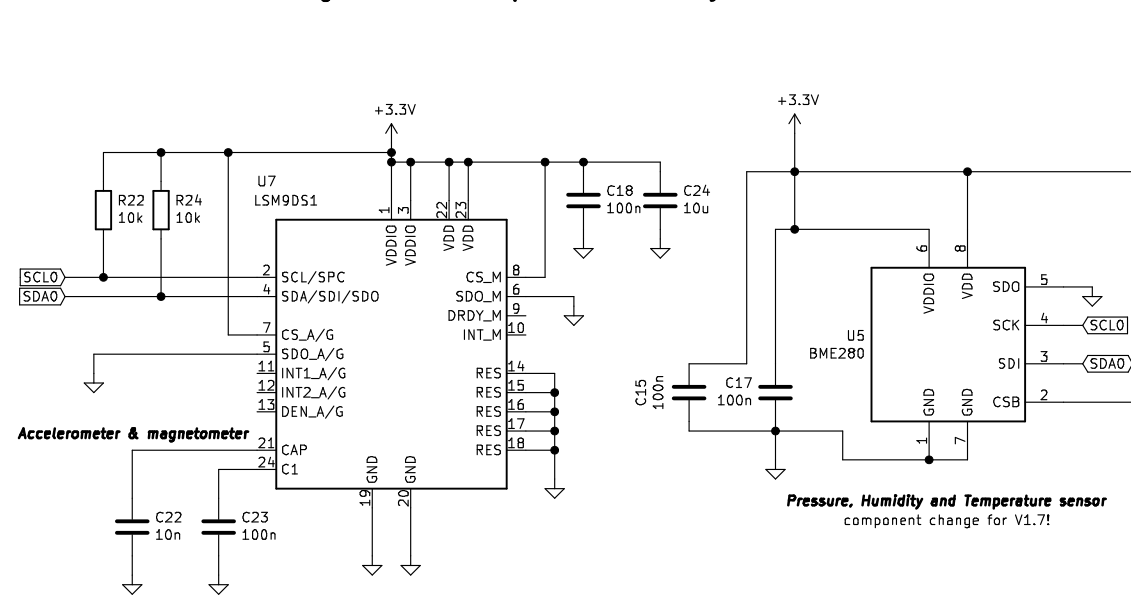


**Released under
CERN Open Hardware License V. 1.2**

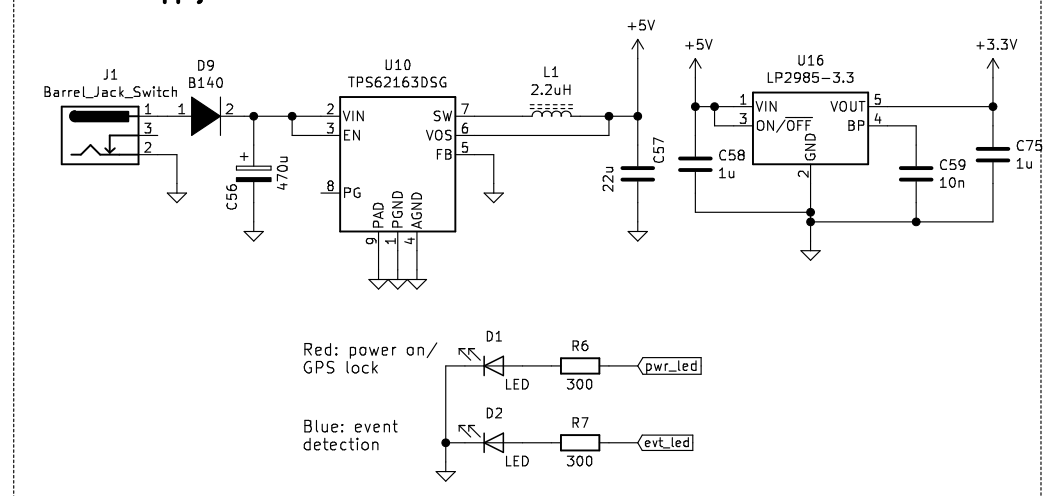
GPS module



Sensors: acceleration, magnetic field, temperature, humidity



Power Supply and Indicator LEDs



Changes for V1.7 schematic
Revised USB implementation
Input protection diode + cap
Removed interrupts from I2C devices to simplify routing
Revisions to STM32 pins for bootloader

Cosmic PI Project

Sheet: /
File: cosmicpi_1.7.sch

Title: Cosmic PI

Size: A3 Date: /
KiCad E.D.A. kicad 5.1.4-e60b26684ubuntu18.04.1

Rev: 1.7
Id: 1/2

